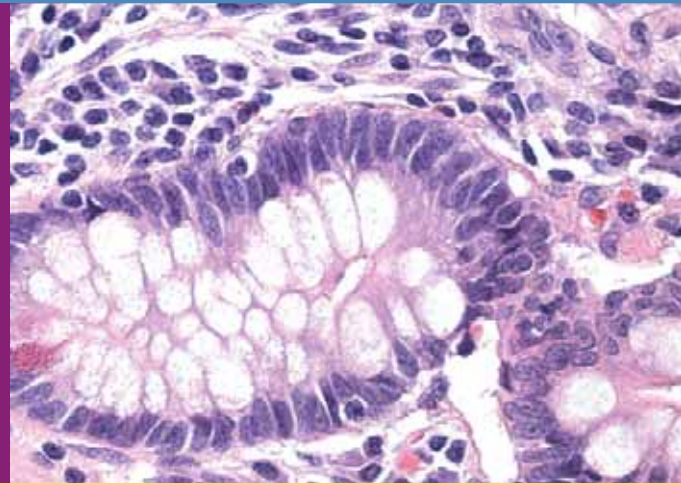


**Thermo Scientific  
Shandon Varistain® Gemini ES**

**Maximize your Efficiency  
by Organizing your Staining  
Workflow**



Multiple Programs

Load-on-demand

Unique Design

The Thermo Scientific Shandon Varistain Gemini ES –  
A multi-dimensional stainer designed to maximize your  
efficiency by organizing your staining workflow needs.



The Shandon Varistain Gemini ES has all the straightforward features of the original Shandon Gemini that customers have come to expect while adding a sophisticated user interface for more intuitive operation.

**Key features of the new user interface include:**

- Editing capabilities for up to 15 active protocols
- Step-start capabilities for any protocol
- Simultaneous performance—run separate protocols at the same time with multiple baskets in process
- Enhanced screen graphics
- More informative help screens
- User-defined reagent names
- Direct screen access to daily functions

**Best of all, the hallmark features of the Shandon Varistain Gemini remain in the Shandon Varistain Gemini ES version:**

**Flexibility** –Performs multiple protocols simultaneously.

**Load-on-demand with urgent start option** – Allowing users to prioritize “urgent” baskets—without compromising previously loaded staining baskets.

**Unique design** – Two-level design saves bench space. Lower-level staining stations are on a turntable for easy access of reagent stations from the front of the unit.

**Auto-allocation** – Optimizes reagent usage and effectively uses available staining stations to calculate the quickest throughput path for a particular protocol.

**Auto-return** – Ability to recall any loaded basket to the load door.

**Quality control features** – Displays reagent usage and batch throughput. Offers entire event logs and reagent layout storage on floppy or printed formats.

**Passcode protection** – Keeps customized protocols safe and secure.

Beyond hallmark features, the Shandon Varistain Gemini ES also provides a new and improved user guide, quick reference cards for simplified access to daily functions and comprehensive contracts for years of worry-free, dependable operation.

**Additional features of the Shandon Gemini ES include:**

- The ability to load multiple 20-slide baskets
- Units available with or without five independently heated positions
- Six running water stations
- Twenty-six reagent stations
- Four configurable doors for convenient loading and unloading
- Battery back-up that delivers 40 minutes of continual staining power



Load baskets with just one hand



Lockable baskets secure slides even upside down



**Safety first and foremost**

- Power supply with a voltage range from 110V – 240V is strong enough to handle power fluctuations including surges, spikes and brown-outs
- In the event of a power outage, battery backup delivers 40 minutes of power to complete staining steps for slides in process
- Fume control easily managed with carbon filters or vent adapter kit
- Internal flow regulators and anti-siphon devices protect water supply
- Smart software keeps unit’s robotic arm from entering user-access areas



## Thermo Scientific Shandon Varistain Gemini ES Specifications

| Description   | Quantity | Order Number |
|---|----------|--------------|
| Shandon Varistain Gemini ES Automatic Slide Stainer without heat (dual voltage, no monitor)   | 1        | A78000003    |
| Shandon Varistain Gemini ES Automatic Slide Stainer without heat (dual voltage, with monitor) | 1        | A78000004    |
| Shandon Varistain Gemini ES Automatic Slide Stainer with heat (dual voltage, no monitor)      | 1        | A78000013    |
| Shandon Varistain Gemini ES Automatic Slide Stainer with heat (dual voltage, with monitor)    | 1        | A78000014    |

### Included With Product:

|                                     |              |           |
|-------------------------------------|--------------|-----------|
| Reagent pots                        | 3/pack       | A78010487 |
| Reagent pot cover/crescent          | 4/pack       | A78010488 |
| Reagent pot cover/single            | 6/pack       | A78010489 |
| Staining basket/carrier             | 5/pack       | A78010466 |
| Charcoal filter                     | 1 each       | 9990610   |
| Water wash pot                      | 1 each       | A78010201 |
| Water inlet hose                    | 1 each       | AP14160   |
| Outlet hose                         | 1 meter each | AM03957   |
| Operator manual                     | 1 each       | A79610100 |
| Screened data cable                 | 1 each       | A78030174 |
| VGA Monitor (Outside North America) | 1 each       | AP15308   |
| VGA Monitor (North America only)    | 1 each       | 10002468  |
| VGA Extension cable                 | 1 each       | AP14185   |
| Power cord set                      | 1 each       | P12032    |

### Optional Accessories

|   |         |           |
|---|---------|-----------|
| Static water wash station kit (left and right assembly) | 1 kit   | A78010226 |
| Stainless steel insert (for manual coverslipping)       | 3/pack  | A78010505 |
| Basket adapter for large slides                         | 10/pack | A78010510 |
| Sakura® basket carrier                                  | 5/pack  | A78010404 |
| Hacker coverslipper adapter                             | 1 each  | B1000529  |
| Vent adapter kit  | 1 each  | A78010467 |

### Physical Specifications

#### Stainer

Dimensions: (W x D x H): 28.5" x 28" x 34.5" (73 x 72 x 88cm)

Weight: 176lbs (80kg)

Power Requirements: (100-240V AC, 50/60Hz, 300VA)

#### Power Supply Unit

Dimensions: (W x D x H): 14" x 18.25" x 6.5" (36 x 46 x 17cm)

Weight: 22lbs (10kg)

#### Agency Approvals

Meets international safety standard IEC 1010; is CE marked and CSA NRTL/C approved.



### A Total Workflow Solution

We're proud to introduce our new Thermo Scientific Shandon ClearVue Glass Coverslipper. Compatible with the Varistain Gemini ES, Shandon ClearVue's dynamic technology solves even the busiest laboratory's workflow challenges.

To obtain additional information on the Shandon ClearVue, contact your local sales representative.

© 2008 Thermo Fisher Scientific Inc. All rights reserved. Sakura is a trademark of Sakura Finetek, Inc. All other trademarks are the property of Thermo Fisher Scientific Inc. and its subsidiaries.

United States  
1-800-522-7270  
(269) 372-2674 fax

United Kingdom  
0800 0189396 +44 (0) 1928 562501  
+44 (0) 1928 562627 fax  
M41000 R3/08

[www.thermo.com/pathology](http://www.thermo.com/pathology)

Anatomical Pathology

**Thermo**  
SCIENTIFIC