

Thermo Scientific HistoStar Specifications

Dimensions	Embedding module (W, D, H)	650 x 600 x 410 mm
	Cold module (W, D, H)	430 x 600 x 410 mm
Weight	Embedding module	25 kg
	Cold module	20 kg
Capacity, Wax Reservoir		5 litres
Temperatures	Wax reservoir	50–70 °C
	Cold spot	5 °C
	Hot spot	50–70 °C
	Tissue storage	50–70 °C
	Mold storage	50–70 °C
	Cold plate	-12 °C

Ordering Information

Description		Part Number
HistoStar Instrument (Complete)	220–240Vac 50/60Hz	A81000001
	100–120Vac 50/60Hz	A81000002
	220–240Vac 50/60Hz	A81000003*
HistoStar Cold Module	220–240Vac 50/60Hz	A81000004
	100–120Vac 50/60Hz	A81000005
	220–240Vac 50/60Hz	A81000006*
Tamping Tools Kit, Set of 2–1 x 20mm and 1 x 12mm		A81010030
Spatula Kit, Set of 2		A81010031
Cassette Lid Storage Cover		A81010026
Magnifier Assembly		A81010032
Footswitch		AP16629
Electric, Heated Forceps – Red – 1mm tip		A81010033
Electric, Heated Forceps – Yellow – 2mm tip		A81010034
Electric, Heated Forceps – Blue – 4mm tip		A81010035
Document Holder Kit		A81010036

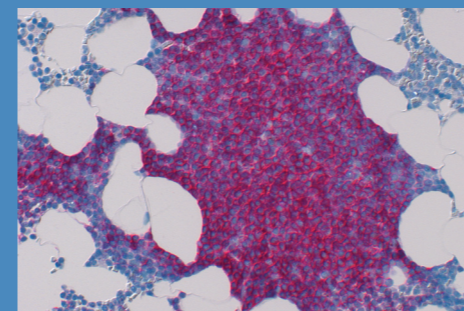
* China variant – not available in ROW

Local Distributor Contact Information

© 2010 Thermo Fisher Scientific Inc. All rights reserved. All trademarks are the property of Thermo Fisher Scientific Inc. and its subsidiaries.

Anatomical Pathology	4481 Campus Drive Kalamazoo, MI 49008 USA +1 (800) 522-7270	Tudor Road, Manor Park Runcorn, Cheshire WA7 1TA UNITED KINGDOM + 44 1928 534 000
-----------------------------	--	--

www.thermo.com/pathology



The Shining New Light in Embedding – Thermo Scientific HistoStar

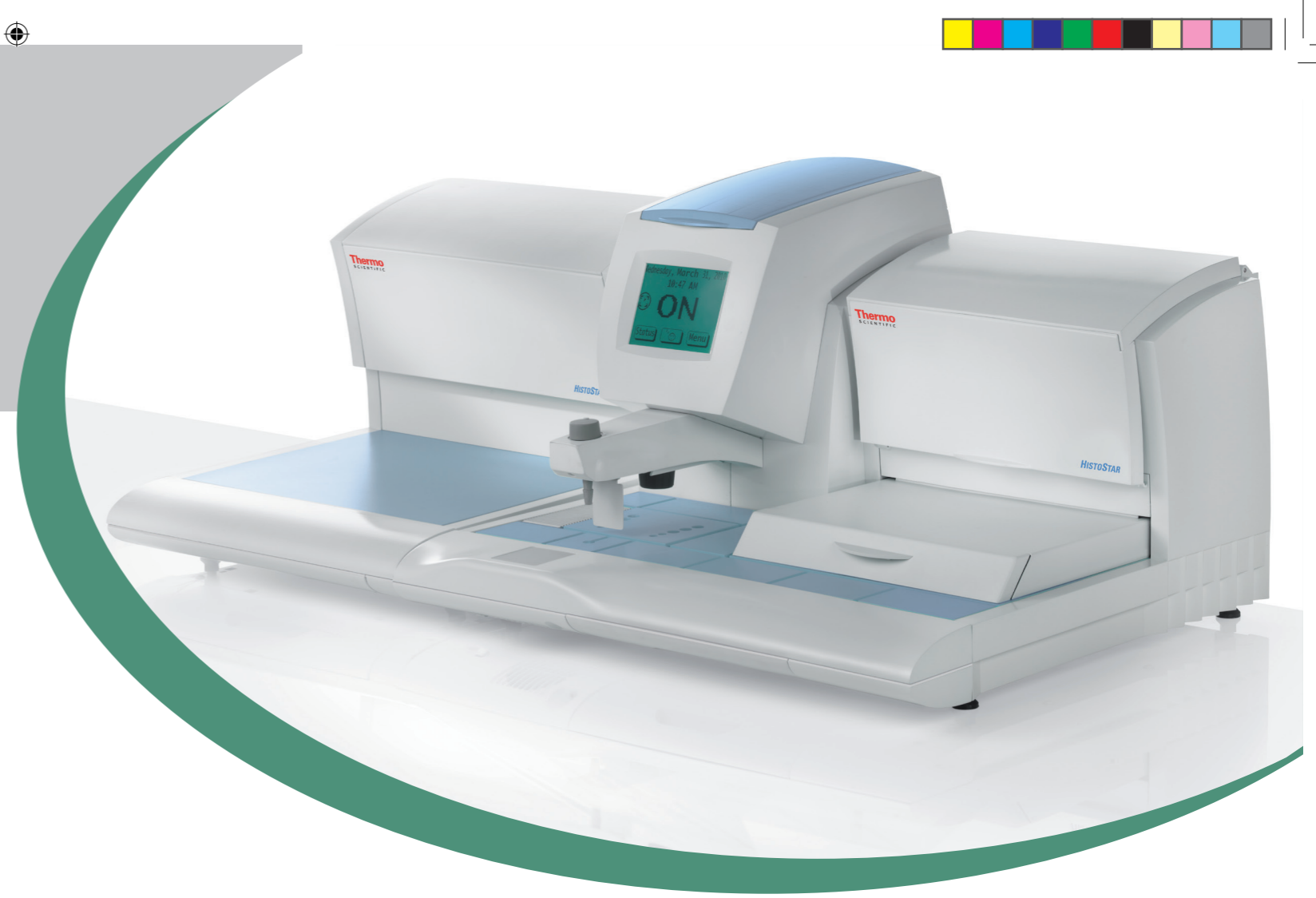
Safety Ergonomics Capacity Quality

Part of Thermo Fisher Scientific

Thermo
SCIENTIFIC

Thermo Scientific HistoStar – The Shining New Light in Embedding.

With its cool, contoured surfaces and innovative new features, the Thermo Scientific HistoStar embedding centre delivers real improvements in user comfort and productivity.



High capacity – Maximising productivity for the busiest of laboratories.

Cool and contoured

All user contact points are smooth and insulated providing a cool and comfortable workspace. Pressure points and uncomfortable heated areas are eliminated.

Well lit and clutter free

Cool LED lighting (Pat. Pending) provides specimen illumination, at user selectable intensities, without the clutter of awkward remote lighting. A low profile dispense head further enhances specimen visibility.

High capacity

With its large capacity tissue storage tank the HistoStar is capable of accepting baskets from any tissue processor. The 5 litre paraffin reservoir and large area cold plate have been designed for maximum productivity in the busiest of laboratories.

Any sample size handled with ease

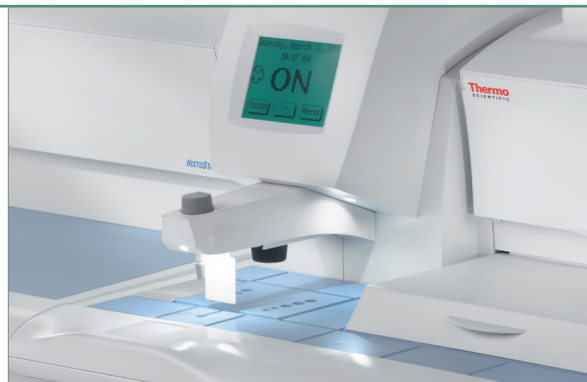
Thermo Scientific HistoStar is the first Embedding centre to incorporate an adjustable paraffin dispenser paddle. A simple adjustment moves the paddle to accommodate the samples you are working with. Even Super Mega Cassettes can be embedded with ease.

Intuitive Interface

Large easy to read touch screen display allows quick access to the precise temperature controls and other parameters. Programmable “sleep” mode saves energy and accommodates user workflow.

Full accessory range

Optimise your Thermo Scientific HistoStar embedding system with a wide range of tools and accessories; including: tamping tools, heated forceps, magnifier and foot pedal.



LED lighting (Pat. Pending) – Recessed LED lighting provides 5 levels of illumination for both the specimen and accessory areas, eliminating the clutter of remote lamps and the need for bulb replacement.



Modular cold plate – Allows positioning to the right or left of the HistoStar unit or stand alone operation.

Integrated Paratrimmer®

The Thermo Scientific HistoStar is the only embedding centre with a heated wax trimmer built directly into the work space. Now excess paraffin can be removed during the embedding process without the need for additional equipment.

Dependable Performance

The robust design of the HistoStar minimises moving parts, reducing wear and service requirements and thus ensuring dependable performance for years to come.

- Improved specimen visibility via patented LED lighting and a clutter free work area.
- High capacity for maximum productivity
- Contoured design for greater user comfort
- Adjustable dispensing to accommodate all cassette sizes
- Integrated Paratrimmer to complete specimen preparation prior to sectioning



Touch screen – Simple to navigate interface provides easy access to all settings.



Ergonomic design – Contoured surfaces and innovative illumination let you focus on the embedding process, without discomfort or clutter.